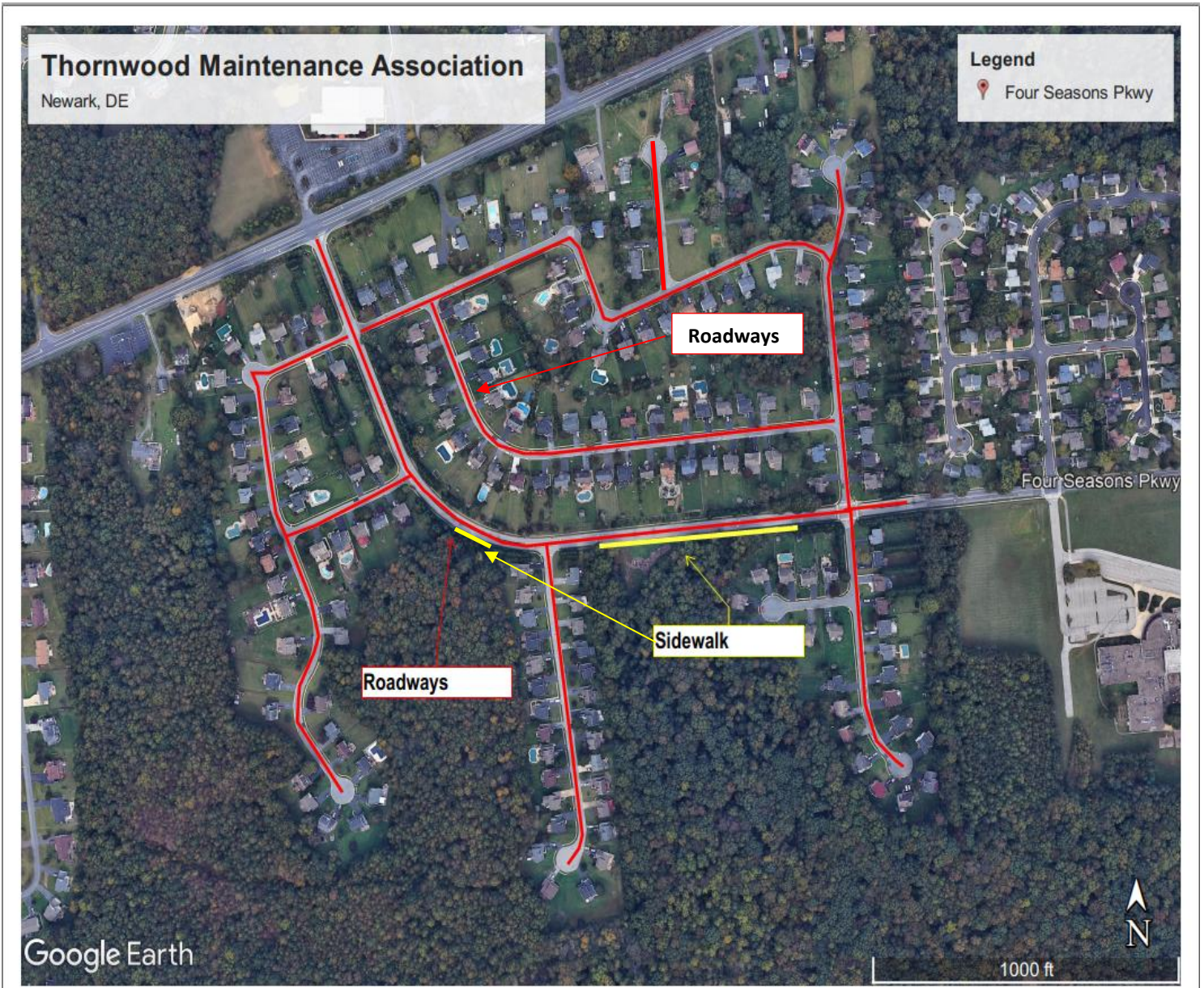


REQUEST FOR SNOW REMOVAL PROPOSAL
Thornwood Maintenance Association
October 15th, 2023 - April 30th, 2024



GENERAL STANDARDS:

The contractor shall be familiar with the project premises and how the existing conditions will affect his or her work during the horticultural service phases of this agreement.

Throughout the term of the Agreement, the contractor shall maintain at his or her sole expense Comprehensive General Liability insurance with a minimum coverage of one million dollars and automobile liability coverage covering his activities on the project premises. Contractor shall furnish a copy of his/her license with a certificate of insurance listing the association as the additional insured. The contractor shall also maintain at his or her sole expense the applicable statutory required limit of worker's compensation insurance coverage.

Contractor shall also furnish all labor, equipment and materials necessary to complete the maintenance of the areas described above in a professional manner. Maintenance shall consist of plowing, snow blowing, salting, and any other procedures consistent with good snow removal practices necessary to ensure safety in the areas owned by the association.

Upon completion of a storm, contractor shall visit the sites to determine if areas need to be treated to prevent unsafe conditions. Upon that assessment, the contractor shall contact the property manager for direction of the Board of Directors. Additionally, if prevention of icy conditions is needed, contractor shall make a recommendation to the property manager with sufficient time to coordinate pre-treatment.

Roads Serviced (Plowing):

- School Feeder
 - Four Seasons Parkway

- Non-Feeder
 - Alanrose Ct
 - Beaumin Ct
 - Briarcliffe Ct
 - Charles Point
 - Clover Mill Dr
 - Hazelwood Dr
 - Oak View Dr
 - Old Baltimore Pike (*Only 4' at end of driveways of 1348 and 1350 to clear DelDOT piles. See map pg.4*)
 - Spur Ridge Ct
 - Thistleberry Dr

Scope Of Service (Initial Triggers):

- **Roadways:**
 - **Four Seasons Parkway – School Feeder Road**
 - Dispatch only when authorized by the Board of Directors when accumulation is **2.0" to 3.99"**
 - Dispatch when accumulation is at **4"**.
 - **Non-Feeder Roads**
 - Dispatch when accumulation is at **4"**.

- **Sidewalks:**
 - Remove the snow from the Playground sidewalk (419'), after accumulation has reached **4"**. Calcium and/or Magnesium Chloride (Concrete safe Ice Melt) application as necessary.
 - Remove the snow from the sidewalk located on Four Seasons Parkway between Clover Mill Drive and Charles Pointe (138'), after accumulation has reached **4"**. Calcium and/or Magnesium Chloride (Concrete safe Ice Melt) application, as necessary.
 - After each ice accumulation event, treat these sidewalks.

Follow-Up Services:

- **Roadways:** As directed by the Board of Directors.
- **Sidewalks:** As directed by the Board of Directors.

Sidewalks Serviced: (Clearing/Shoveling) (See attached image)

- Approx. 638' on Four Seasons Pkwy

Cost breakdown must be as follows:

- Roadway Snow/Ice Removal
 - Cost Per Plowing at:
 - Four Seasons Parkway – School Feeder Road - Initial Dispatch at 2”
 - Non-Feeder Roads – Initial Dispatch at 4”
- Playground Sidewalks Snow/Ice Removal
 - Cost Per Labor Hour
 - Initial Dispatch at 4”
 - Each Follow-up Service at 4”
 - After each ice accumulation event, treat these sidewalks as necessary
- Materials
 - Cost Per Ton of Salt
 - Cost Per 50# Bag of Ice Melt, non-salt product
 - Contractor Must List Chemical Breakdown of this Product
- Additional Clearing Costs (if applicable)
 - Skid Loaders
 - Cost Per Hour (if needed)
 - Front-End Loaders
 - Cost Per Hour (if needed)

Invoice Submission:

- Due to strict requirements from DelDot, **ALL** invoices must include the cost information breaking out “School Feeder” roads and “Non-Feeder” roads.
- **No** invoices will be paid unless the aforementioned information is submitted.

We thank you for your interest.

Marjorie Theis
mtheis@aspenpropertymgmt.com
410.620.2598 ext. 4007



Thornwood - Old Baltimore Pike

Author:



New Castle County Delaware GIS: <https://gis.nccde.org>

Disclaimer: For informational purposes only - not to be used as official documentation.



Date: 7/11/2023

